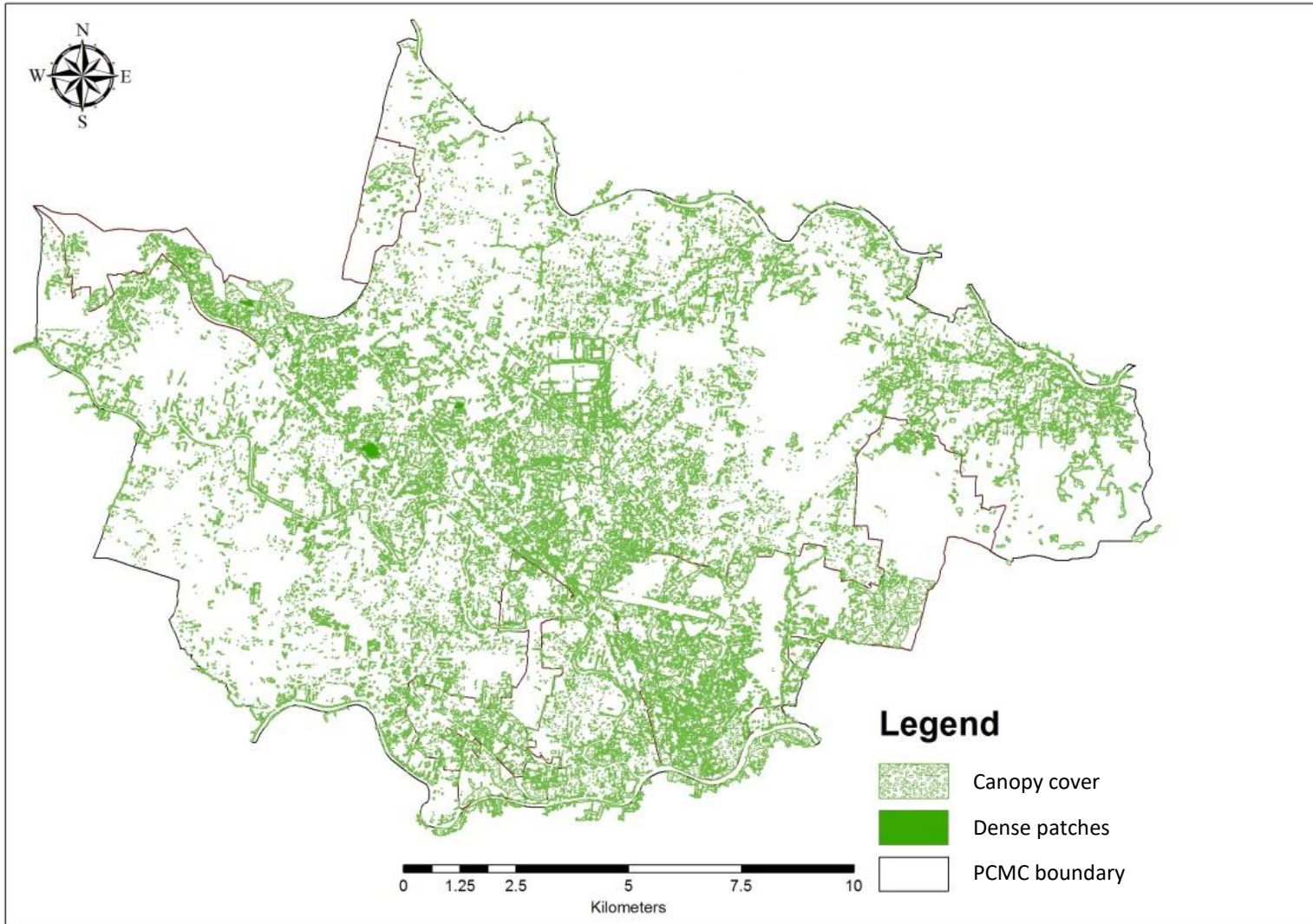


Green Cover of Pimpri-Chinchwad Municipal Corporation



Recently a study was carried out to calculate the green cover of Pimpri-Chinchwad Municipal Corporation as part of the tree census project of PCMC. **The calculated green cover includes areas like gardens, playgrounds, lawns, grass, trees, shrubs, herbs, and other dense patches.**

The total area of PCMC is 181 Sq.km, out of which the green cover area comprises 48.18% (85.29 Sq.km).

The methodology for calculating green cover is as follows:

A remotely sensed satellite imagery was obtained from a GIS source. The imagery was processed in QGIS software and vegetation indices namely NDVI (normalized difference vegetation index) was calculated in the software for green cover estimation.

Dr. Ninad Raut
Lead- Ecology and Biodiversity



Terracon Ecotech Pvt Limited
1st Floor, J/18, M R colony, Relief Road, Santacruz West,
Mumbai 400054